



MASTER PLAN

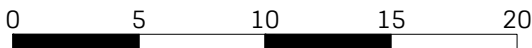


STAGE PLAN

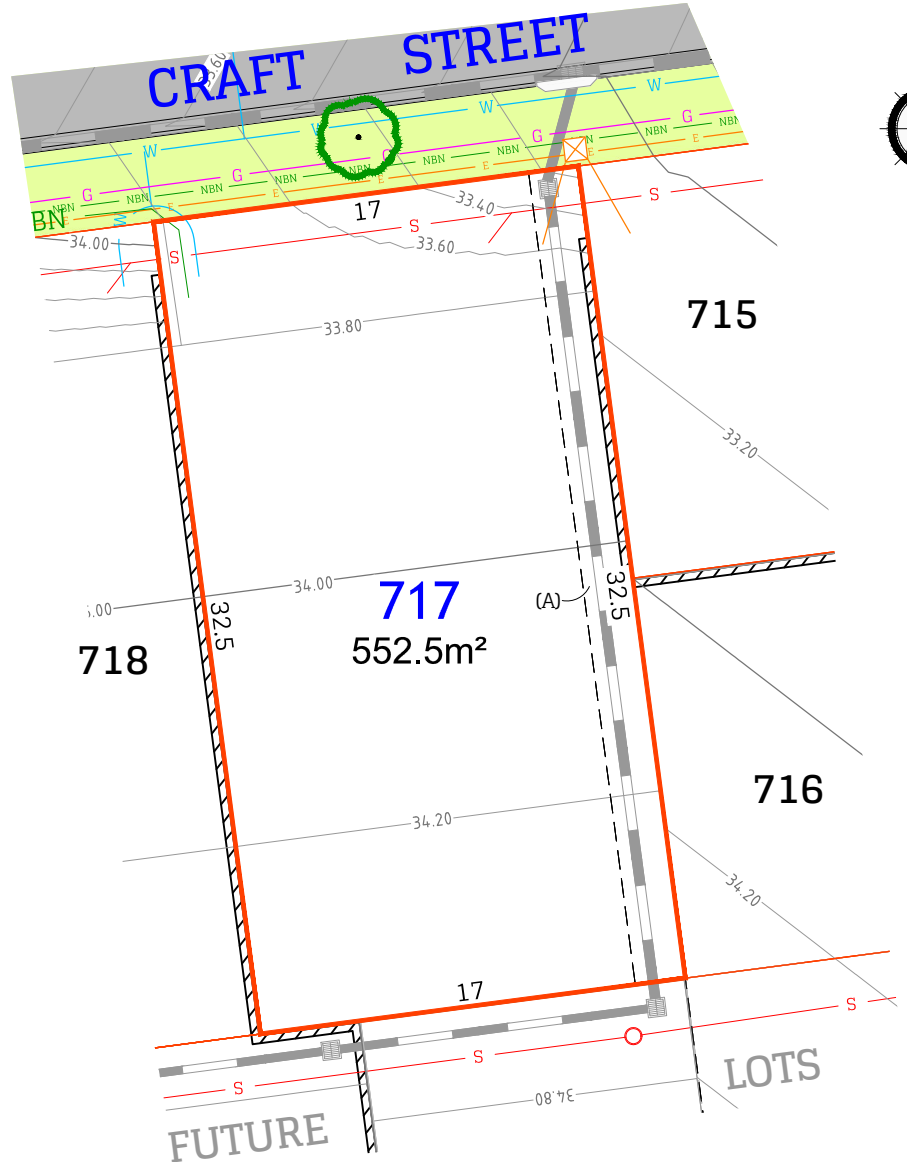


THE  
CRAFT  
RELEASE

PRELIMINARY SITE ANALYSIS PLAN



SCALE 1:300 @ A4



LEGEND:

|  |                   |  |                          |
|--|-------------------|--|--------------------------|
|  | Sewer main        |  | O/H Electricity services |
|  | Sewer Rising main |  | U/G Electricity services |
|  | Sewer Man Hole    |  | Power Pole               |
|  | Water main        |  | Street Light             |
|  | Water Hydrant     |  | Electrical Pillar        |
|  | Water Stop Valve  |  | NBN                      |
|  | Stormwater pipe   |  | NBN Pit                  |
|  | Stormwater lintel |  | Gas (available)          |
|  | Stormwater Pit    |  | Retaining Wall           |
|  | Street Tree       |  | Design surface contour   |

DISCLAIMER/NOTES:

- Contours are based on finished design levels and are subject to construction and Council certification and therefore should not be considered as final or as-built.
- Location of utility services including but not limited to power, water, sewer, communications and gas are subject to construction and Supply Authority certification and therefore should not be considered as final or as-built.
- Survey information such as boundary dimensions and areas, easements etc are subject to final survey. Purchasers should refer to the Deposited Plan and 88B Instrument contained in the Contract for Sale of Land for further detailed information.
- This Preliminary Site Analysis Plan has been collated from various sources of design information and is provided for convenience to assist Purchasers in obtaining quotation/tenders for dwelling construction.
- This document does not form part of the Contract of Sale of the Land.

REVISION/S: (A) - INTIAL ISSUE

DATE: 17/09/2021

BY: ADW Johnson 239240 (7)

(A) EASEMENT TO DRAIN WATER 2 WIDE