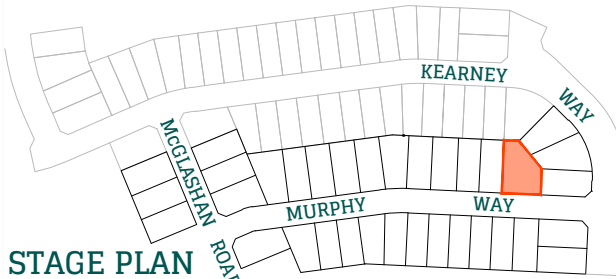
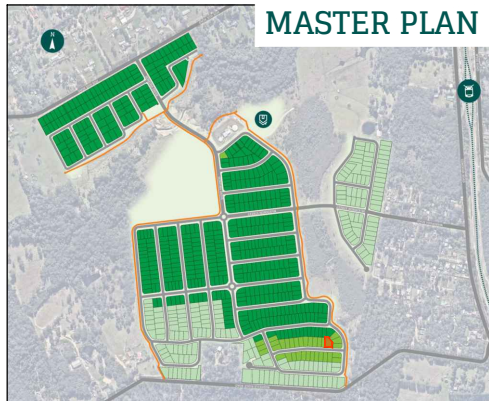




Radcliffe
Wyee

MURPHY RELEASE

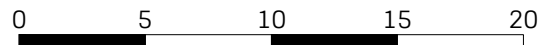
MASTER PLAN



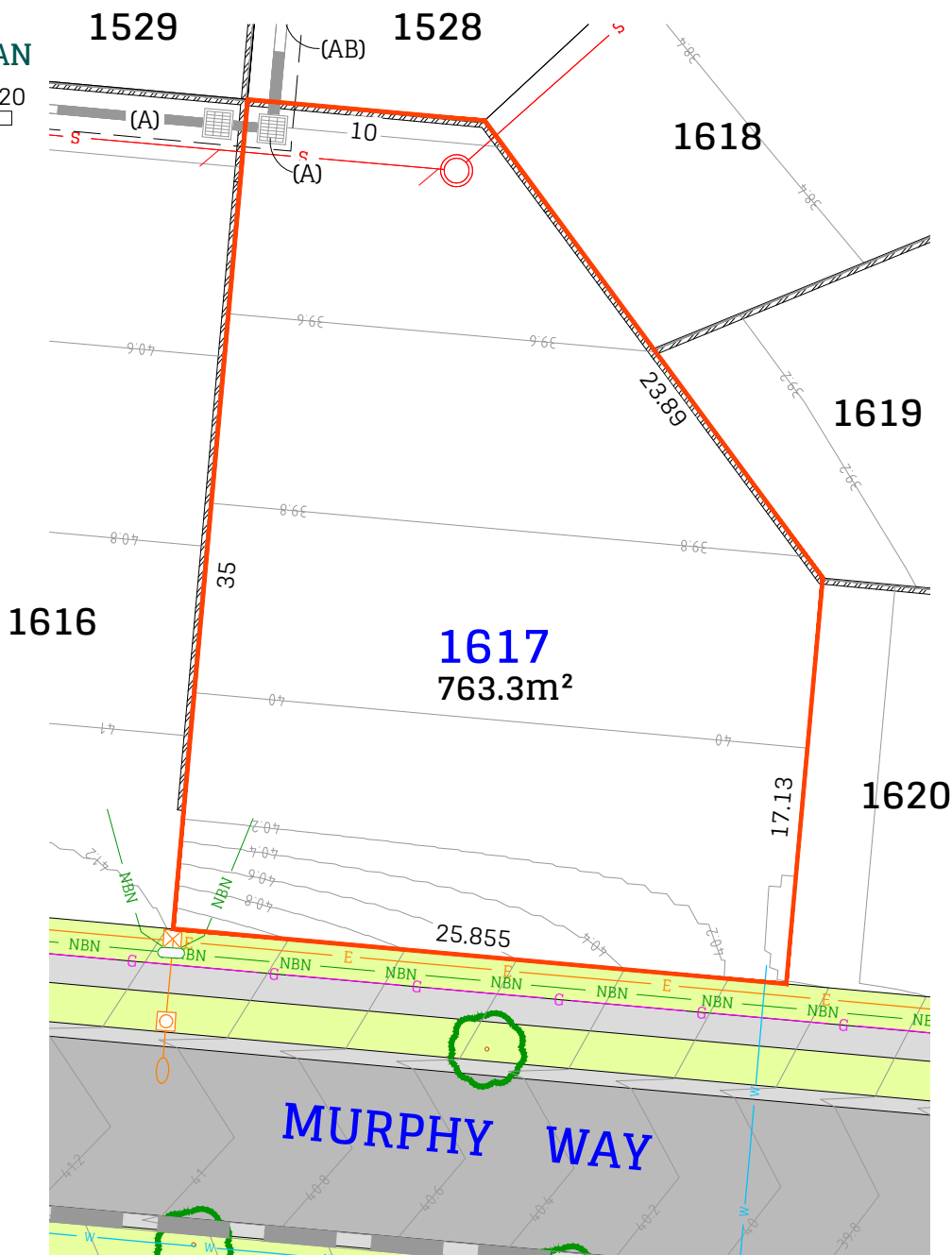
STAGE PLAN

(A) EASEMENT TO DRAIN WATER 2 WIDE
(AB) EASEMENT TO DRAIN WATER 2 WIDE

PRELIMINARY SITE ANALYSIS PLAN



SCALE 1:300 @ A4



LEGEND:

- | | | | |
|--|-----------------------------------|--|--------------------------|
| | Sewer main | | Gas (available) |
| | Sewer Rising main | | U/G Electricity services |
| | Sewer Man Hole /maintenance shaft | | Power Pole |
| | Water main | | Street Light |
| | Water Hydrant | | Electrical Pillar |
| | Water Stop Valve | | NBN |
| | Stormwater pipe | | NBN Pit |
| | Stormwater lintel | | Retaining Wall |
| | Stormwater Pit | | Design surface contour |
| | | | Street Tree |

REVISION/S: (A) - Stage 16

DATE: 25/09/2025

BY: ADW Johnson 239240 (16)

DISCLAIMER/NOTES:

- Contours are based on finished design levels and are subject to construction and Council certification and therefore should not be considered as final or as-built.
- Location of utility services including but not limited to power, water, sewer, communications and gas are subject to construction and Supply Authority certification and therefore should not be considered as final or as-built.
- Survey information such as boundary dimensions and areas, easements etc are subject to final survey. Purchasers should refer to the Deposited Plan and 88B Instrument contained in the Contract for Sale of Land for further detailed information.
- This Preliminary Site Analysis Plan has been collated from various sources of design information and is provided for convenience to assist Purchasers in obtaining quotation/tenders for dwelling construction.
- This document does not form part of the Contract of Sale of the Land.